

Experience the  
infinite happy world...

ROONGTA  
**Meridian**

3 BHK Luxurious Flats  
Govind Nagar, Nashik



**Roongta Group**<sup>TM</sup>  
Builders & Developers  
INNOVATING... CREATING... TRANSFORMING

Experience the new Meridian Life....



Enter in Greener side of life...

Actual view of way to Roongta Meridian

# Golden Moments



Awarded for  
**"BIGGEST BUILDER IN NASHIK"**  
 by  
 Hon. (Raje) Shri. Chhatrapati Sambhaji Maharaj



Awarded for  
**"PROUD MAHARASHTRIAN AWARD"**  
 (In Real Estate Category)  
 by Hon. Shri. Hanmantao Gaikwad



Awarded for  
**"ICONIC REALTOR OF THE YEAR, NASHIK"**  
 by Actor & Film Director  
 Shri. Makarand Deshpande  
 Organised by Times Of India.



Awarded for  
**"AFFORDABLE HOMES WITH BEST AMENITIES"**  
 By Hon. C. M. Shri. Devendraji Fadnavis



Awarded for  
**"FORTUNE HUNTERS OF NEW INDIA"**  
 by Hon. State Minister Shri. Satyapalji Singh  
 in the presence of  
 Hon. C.M. Shri. Devendraji Fadnavis



Awarded for  
**"THE DREAM BUILDERS"**  
 by Hon. C.M. Shri. Devendraji Fadnavis  
 on the occasion of Lokmat Vishwakarma -  
 The Dream Builders Book Publication



Awarded for  
**"NEXT BEST GENERATION BUILDER AWARD"**  
 by Divya Marathi

ROONGTA  
**Meridian**  
3 BHK Luxurious Flats



ROONGTA  
**Meridian**  
3 BHK Luxurious Flats



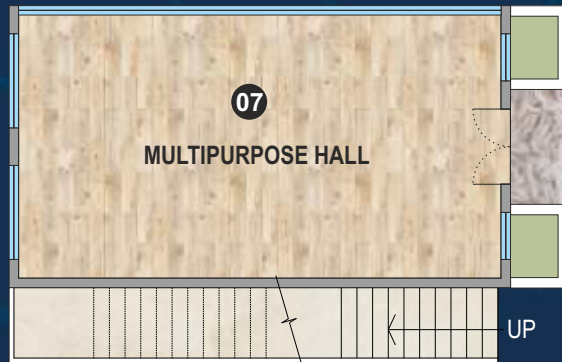
**CAMPUS AMENITIES**

ROONGTA  
**Meridian**  
3 BHK Luxurious Flats

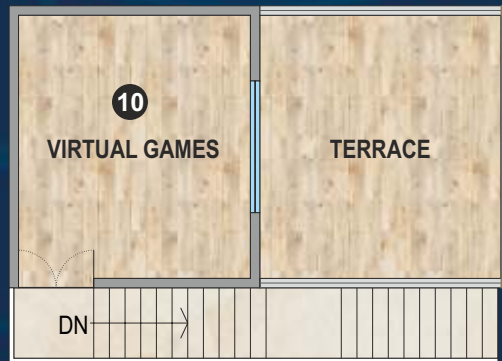


**CLUB HOUSE & WATER BODY**

**CAMPUS AMENITIES PLAN**



GROUND FLOOR PLAN



FIRST FLOOR PLAN



**CAMPUS AMENITIES**

- |                         |                   |                       |                                       |
|-------------------------|-------------------|-----------------------|---------------------------------------|
| 1. Stage                | 4. Kids Play Area | 7. Multipurpose Hall  | 10. Virtual Games<br>(at First Floor) |
| 2. Water Body           | 5. Sand Pit       | 8. Rock Climbing Wall | 11. Party Lawn                        |
| 3. Senior Seating Space | 6. Green Gym      | 9. Basket Ball Ring   |                                       |



ROONGTA  
**Meridian**  
3 BHK Luxurious Flats

**INDOOR GAMES**



Artist's Impression

ROONGTA  
**Meridian**  
3 BHK Luxurious Flats

**WELL EQUIPPED GYMNASIUM**



Artist's Impression

ROONGTA  
**Meridian**  
3 BHK Luxurious Flats

**STAGE**



ROONGTA  
**Meridian**  
3 BHK Luxurious Flats

**SEATING SPACE**



ROONGTA  
**Meridian**  
3 BHK Luxurious Flats

## CHILDREN PLAY AREA



ROONGTA  
**Meridian**  
3 BHK Luxurious Flats

SAND PIT



ROONGTA  
**Meridian**  
3 BHK Luxurious Flats

**MULTIPURPOSE HALL**



ROONGTA  
**Meridian**  
3 BHK Luxurious Flats

**GREEN GYM**





ROONGTA

Meridian

3 BHK Luxurious Flats

ROCK CLIMBING WALL



ROONGTA  
**Meridian**  
3 BHK Luxurious Flats

**BASKET BALL**



ROONGTA  
**Meridian**  
3 BHK Luxurious Flats

**VIRTUAL GAMES**  
**(AT FIRST FLOOR)**





Artist's Impression

**PODIUM AT FIRST FLOOR**

**Our Associated Brands**

|  |
|--|
| Elevators<br><b>KONE</b><br>OR<br><b>OTIS</b><br><small>United Technologies</small>      |
| Glass<br><b>SAINT-GOBAIN</b>   |
| Steel<br><b>POLAAD</b><br><small>QST &amp; CRS Bars</small><br>OR<br><b>RAJURI STEEL</b> |
| CP Fittings<br><b>Jaquar</b><br><small>experience bathing</small>                        |
| Locks<br><b>Godrej</b>   |
| Kitchen Sink<br><b>CARYSIL</b>   |
| Switches<br><b>GM</b><br><small>SWITCH TO A BETTER WORLD</small>                         |
| Aluminium Frames<br><b>JINDAL</b>  |
| Paint<br><b>asianpaints</b>  |
| Plumbing<br><b>ASTRAL PIPES</b>  |
| Wires<br><b>POLYCAB</b><br><small>WIRES &amp; CABLES</small>                             |

**SPECIFICATIONS**

R.C.C. Frame structure, External wall 6" thick and internal wall 4" thick Block.



Structure



Plaster



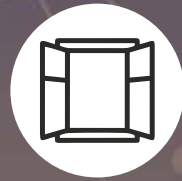
Paint



Doors



Windows



Kitchen



Flooring



Electrification



Bath / Toilets



Parking



Lift



Paved with Paver Blocks

OTIS or KONE lift with genset

External Sandface & Internal neeru finish Plaster.

Internal oil bound distemper. External waterproof paint.

35mm Laminated doors and granite frames for toilets.

Three track aluminium anodized sliding windows with Mosquito Net, Safety Grills & Granite Frames.

Granite kitchen platform 10' with sink by CARYSIL, Ceramic tile dado above Kitchen platform up to 5'

Vitrified 32 x 64 tiles. Terrace floor to be in rustique ceramic tiles.

Concealed wiring by POLYCAB. Adequate number of points of Light, Fan and Plug points. AC Point in master bedroom, GM modular switches. Washing machine point in utility.

Concealed plumbing with hot/cold diverter. Provision for geyser. Single lever JAQUAR toilet fitting. Designer glazed tile (24 X48) up to 8' and anti-skid tiled floor. with superior quality sanitary ware.

ROONGTA  
**Meridian**  
3 BHK Luxurious Flats



# LOCATION PLAN

## NEARBY PLACES



### School & Colleges :

|                                 |          |
|---------------------------------|----------|
| New Era English School          | : 1.5 km |
| Cambridge High School           | : 2.5 km |
| Fravashi Academy                | : 2.6 km |
| Bhosala School/College          | : 4.7 km |
| HPT, BYK, RYK & NBT Law College | : 3.9 km |
| Don Bosco School & College      | : 4.3 km |
| Kilbil High School              | : 4.3 km |



### Hospitals :

|                          |          |
|--------------------------|----------|
| Ashoka Medcover Hospital | : 2.5 km |
| Wockhardt Hospitals      | : 2.9 km |
| Six Sigma Hospital       | : 3.7 km |
| Magnum Heart Institute   | : 3.6 km |



### Temples & Worship Places :

|                     |           |
|---------------------|-----------|
| Shree Balaji Mandir | : 8.9 km  |
| Someshwar           | : 8.0 km  |
| Navshya Ganapati    | : 6.7 km  |
| Panchavati          | : 5.0 km  |
| Trimbakeshwar       | : 28.0 km |



### Entertainment & Shopping :

|                         |          |
|-------------------------|----------|
| City Center Mall        | : 1.9 km |
| Pinnacle Mall           | : 3.0 km |
| Big Bazaar College Road | : 3.7 km |



### Others :

|                              |          |
|------------------------------|----------|
| Jogging Track                | : 0.4 km |
| Mumbai Naka & Mahamarg Stand | : 1.9 km |
| Mumbai Agra Highway          | : 1.4 km |
| Trimbak Road                 | : 2.4 km |
| Thakkar Bus Stand            | : 3.0 km |
| Vegetable Market             | : 1.0 km |



ROONGTA  
**Meridian**  
3 BHK Luxurious Flats





ROONGTA  
**Meridian**  
3 BHK Luxurious Flats

**Architect** : Ar. Umesh Bagul

**R.C.C. Designer** : Er. Shailesh Dhumne

**Legal Advisor** : Adv. Vidyulata Tated



**Roongta Group**<sup>TM</sup>  
Builders & Developers  
INNOVATING... CREATING... TRANSFORMING  
SINCE - 1996

**Corporate Office :**

Shree Tirumala Ashirwad Apartment, Pethe Nagar Road  
(Indira Nagar), Opp. Bal Bharti, Nashik - 422 009.

**Ph.: 0253 - 2328719.**

**City Office :**

Padmalaxmi Apartment, Near Vishwas Bank, Savarkar Nagar,  
Gangapur Road, Nashik - 422 013.

**Call : 97640 31000, 777 000 2222**

**visit us :** [www.roongtagroup.co.in](http://www.roongtagroup.co.in)

**email :** [connect@roongtagroup.co.in](mailto:connect@roongtagroup.co.in)

Follow us :

Mobile Apps :



[maharera.mahaonline.gov.in](http://maharera.mahaonline.gov.in) | MahaRERA No. P51600021754

*Thank You*

☎ 777 000 2222