



ॐ
॥ रामलला ॥
निवास

2 BHK LUXURIOUS FLATS



Established in the year 1996 Lalit Roongta Group has perfected the art of building dreams in Nashik City. The group has grown to be one of the leading Real Estate Developers, serving the needs of their clients. The group has always created wonderful homes, excellent shopping complexes and functional office spaces, inspiring elevations and Vaastu compliant interiors make every venture an architectural excellence.

The group has skilled team of Engineers, Architects & Sales

force who are expert in the construction of residential / commercial projects, the group takes pride in its project management and quality control expertise. The quality control team ensures superior quality while the project management team ensures that schedules are met and promises kept.

Values :

At Lalit Roongta Group every customer is valued and every effort is directed to deliver beyond all expectations. Fulfilling promises, providing

affordable housing solutions, delivering honest results and transparency have always been the group prime strengths. The group also takes up a number of social service and community building activities.

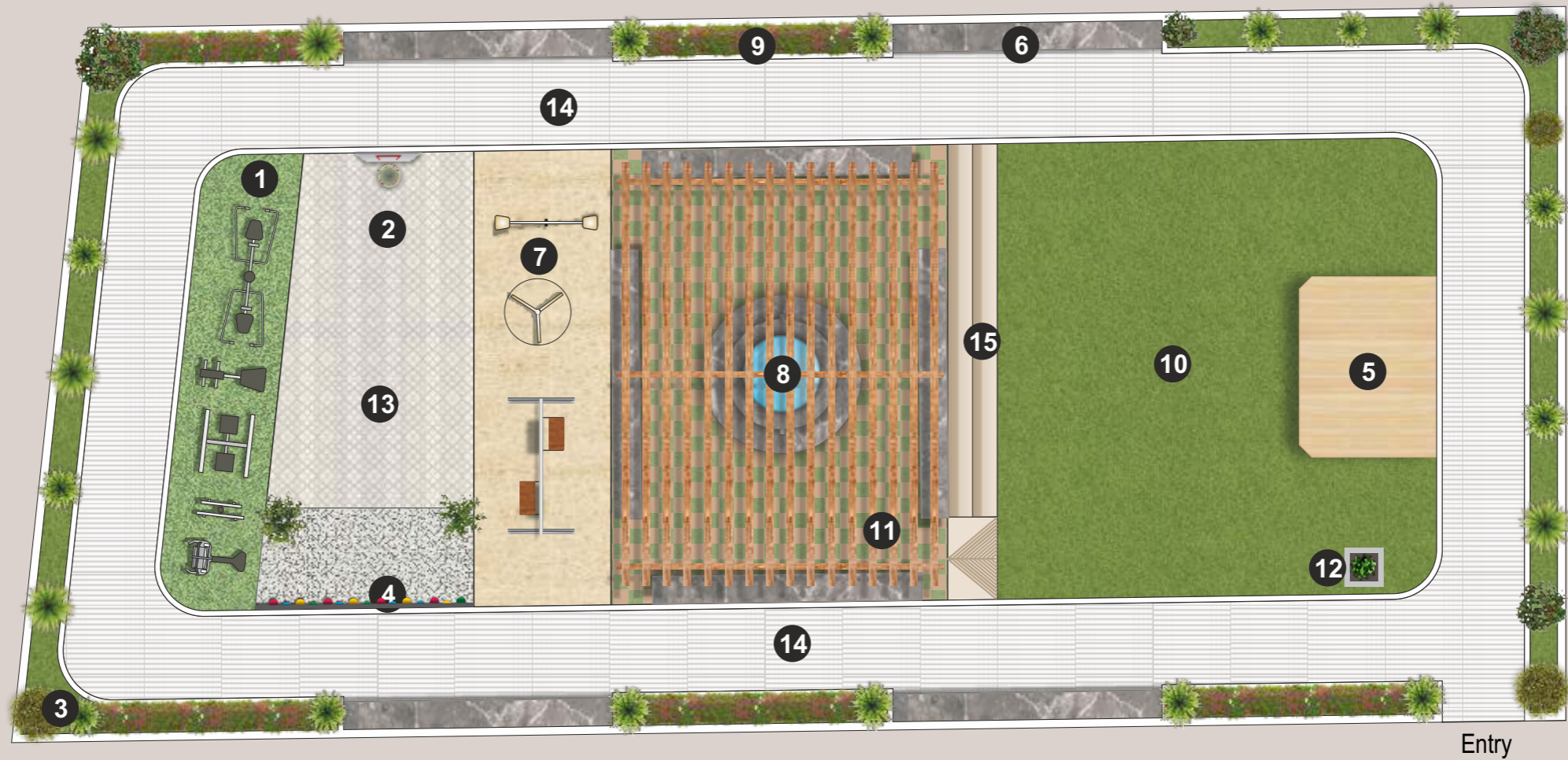
Vision :

To deliver high value and good quality construction coupled with on time delivery schedules. Qualified professionals and self directed teams work towards evaluating customer satisfaction levels.



SUPREME LUXURY AND SUPERIOR COMFORT TO ENABLE
A SPECTACULAR LIFESTYLE

Amenity Area Layout



- | | | | | |
|---------------------|-----------------------|-------------------|--------------------------|-------------------|
| 1. Green Gym | 4. Rock Climbing Wall | 7. Kids Play Area | 10. Party Lawn | 13. Skating Area |
| 2. Basket Ball Ring | 5. Stage | 8. Water Cascade | 11. Pergola with seating | 14. Jogging Track |
| 3. Sensory Garden | 6. Elders Seating | 9. Rose Garden | 12. Tulsi Vrindavan | 15. Amphitheatre |



Artist's Impression



श्री
॥ रामलला ॥
निवास





Artist's Impression



Specifications



R.C.C. Frame structure, External wall 6" thick and internal wall 4" thick Block.



External Sandface & Internal neeru finish Plaster.



Internal oil bound distemper. External waterproof paint.



Laminated doors with laminated frames and granite frames for toilets.



Concealed plumbing with hot/cold diverter. Provision for geyser. Single lever branded toilet fitting. Designer glazed tile (300mm X 600mm) upto beam bottom and matt finish tiled floor, with branded sanitary ware.



Granite kitchen platform 10' with CARYSIL OR Equivalent sink. Ceramic tile dado above Kitchen platform upto beam bottom.



Vitrified 600mm x 600mm tiles. Balcony to be in matt finish tiles.



Concealed wiring by POLYCAB OR Equivalent. Adequate number of point for Light, Fan and Plug points. AC Point in master bedroom. POLYCAB OR Equivalent modular switches. Washing machine point in utility.



Three track powder coated aluminium sliding windows with Mosquito Net, Safety Grills & Granite Frames.



Kone / Otis OR Equivalent lift with battery backup.



ENTER THE WORLD OF ELEVATED EXPERIENCE



Artist's Impression

LET THEM FLY IN THEIR OWN WORLD



श्री
॥ रामलला ॥
निवास



Amphitheater

Artist's Impression



Artist's Impression



Artist's Impression



Artist's Impression

Imaginary Home



Artist's Impression



Artist's Impression



Artist's Impression



Artist's Impression

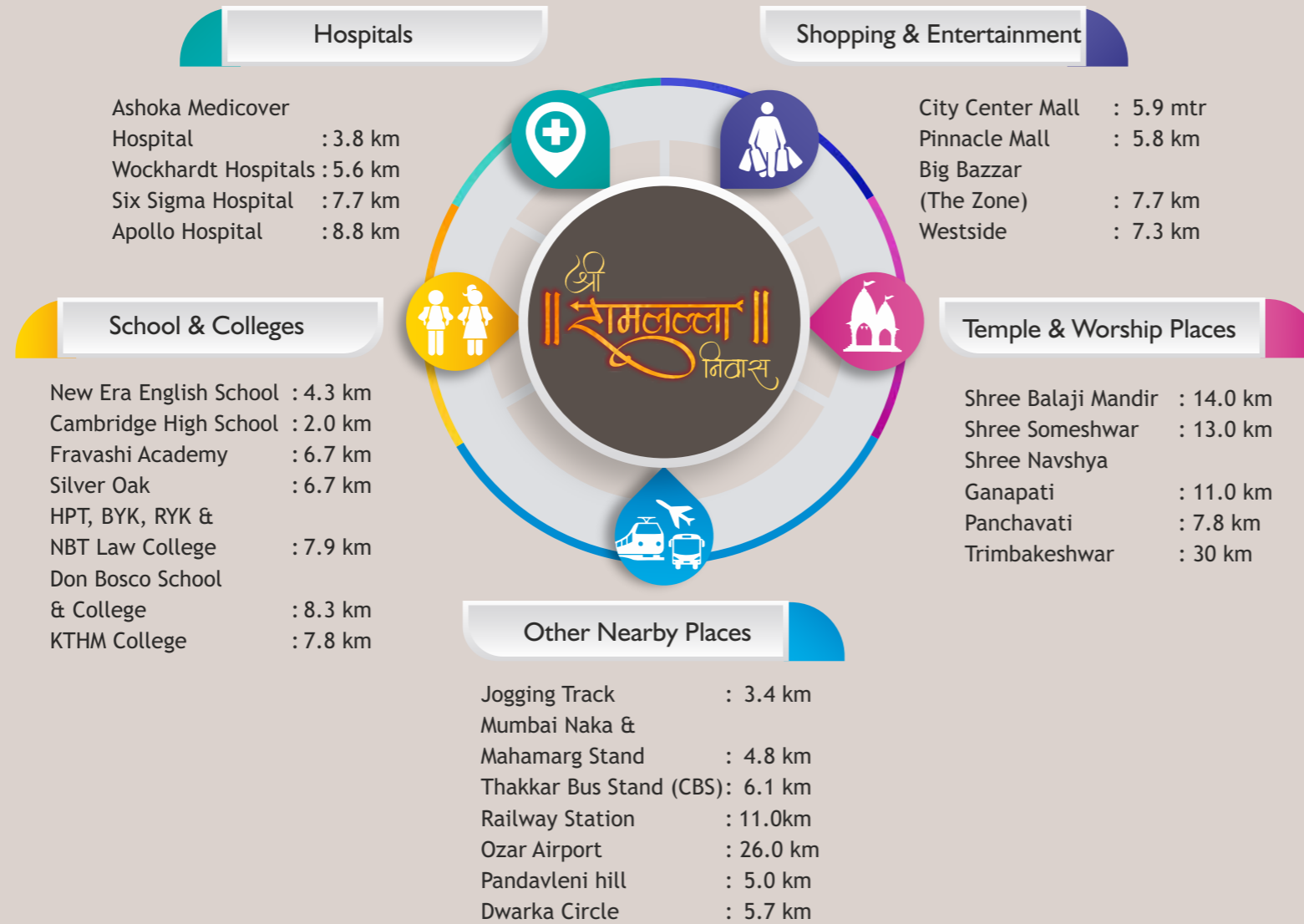


Artist's Impression



Artist's Impression

Nearby Places



Our Associated Brands

Elevators



Glass



Kitchen Sink



Wires & Switches



Paint



Plumbing



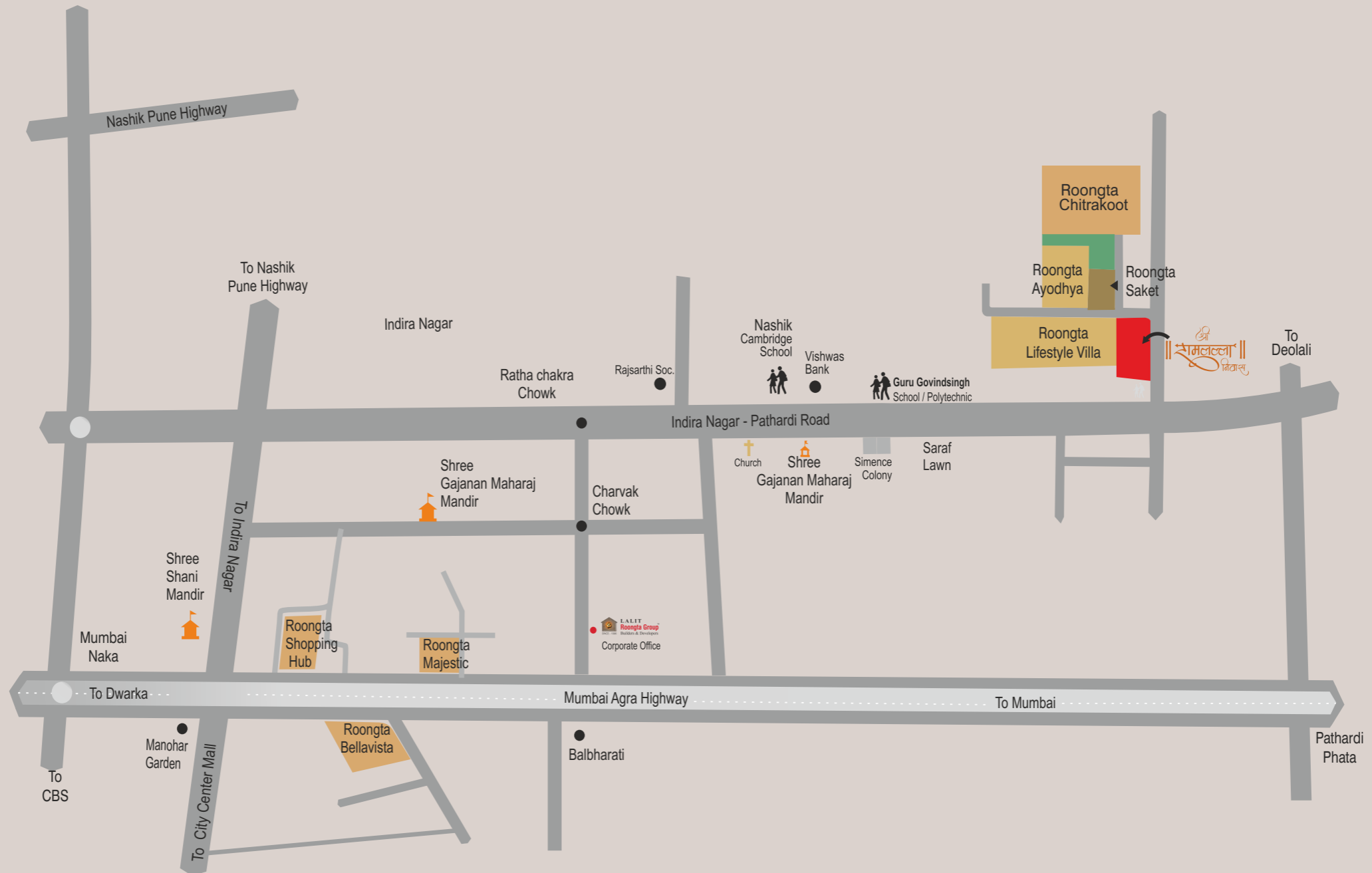
Locks





Indira Nagar, Nashik

Location Map



Golden Moments



Awarded For
MAHARASHTRA SANMAN
by Shri Bhagat Singhji Koshyari
Governor of Maharashtra



Awarded for
**AFFORDABLE HOMES
WITH BEST AMENITIES**
by Shri. Devendraji Fadnavis



Awarded for
ACHIEVERS OF MAHARASHTRA
by Hon. Shri. Nitinji Gadkari
Minister of Road Transport & Highway,
Minister of Micro, Small
& Medium Enterprises



Awarded for
ICONIC REALTOR OF THE YEAR NASHIK
by Actor & Film Director
Shri. Makarand Deshpande



Awarded for
FORTUNE HUNTERS OF NEW INDIA
by Hon. State Minister, Shri. Satyapalji Singh
in the presence of
Shri. Devendraji Fadnavis



Awarded for
**EXCELLENCE IN BEST QUALITY &
TIMELY DELIVERY CONSTRUCTION**
by Renowned Bollywood Actor
Shri. Gulshan Grover



Awarded for
GODA SANMAN
By Hon. Shri Sanjayji Raut, M P & Executive Editor of SAMNA.
Hon. Shri Chaganji Bhujbal, Cabinet Minister of
Food & Civil Supply, Consumer Affairs in Govt. of
Maharashtra & Hon. Shri Dadasaheb Bhuse,
Minister of Agriculture, Govt. of Maharashtra



Awarded for
PROUD MAHARASHTRIAN
In Real Estate Category by
Hon. Shri. Hanmantao Gaikwad



Awarded for
**NEXT BEST GENERATION
BUILDER AWARD**
by Divya Marathi



Awarded for
BIGGEST BUILDER IN NASHIK
by Hon. (Raje)
Shri. Chhatrapati Sambhaji Maharaj



Awarded for
THE DREAM BUILDERS
by Shri. Devendraji Fadnavis



Awarded for
REAL ESTATE HERO
by Shri. Chaganji Bhujbal Cabinet Minister of
Food & Civil Supply,
Consumer Affairs in Government of Maharashtra.

ॐ ॥ रामलला ॥ निवास

Indira Nagar, Nashik.

maharera.mahaonline.gov.in



MahaRERA No. P51600045450



Corporate Office :

Shree Tirumala Ashirwad Apartment, Pethe Nagar Road (Indira Nagar), Opp. Bal Bharti, Nashik-422009

visit us : www.roongtagroup.co.in | email : connect@roongtagroup.co.in

Contact : 97640 31000, 777 000 2222



Member of
CREDAI
NASHIK

NAREDCO NASHIK
National Real Estate Development Council

Architect
Ar. Pankaj Jadhav

R. C. C. Designer
Er. Shailesh Dhumne

Legal Advisor
Adv. Vidyulata Tated

Disclaimer : The information provided in this document, including all pictures, images, plans, drawings, amenities, dimensions, elevations, illustrations, facilities, features, specification, other information etc. mentioned are indicative of the kind of development that is proposed and are subject to change and approval from the competent authorities. Pictures, visuals, perspective views of the building, model, furniture and maps are as per architectural drawings and the same shall be subject to change and shall be constructed subject to approvals of competent authorities and shall be in compliance of RERA Acts and Rules and Regulations. Furniture and Furnishings shown in the show flat are only for representation for promotional purposes and shall not be provided in the actual project. Please get in touch with our Sales team for updated project information before making any purchase decision. Pictorial representation is used to simply convey the essence of suggested lifestyle.